

B-COMM[®]

Version 5.7.0

Classification: Public

B-COMM 5.7.0

Villingen-Schwenningen, 25.06.2025



New Features in B-COMM 5.7.0

01	Overview Slide 03	06	PEC (GUI configurator) Slide 09
02	LockerLock 2120-K6 (Support) Slide 04	07	GUI (User password, common) Slide 11
03	Documentation in HTML-format Slide 05	08	Further Features Slide 12
04	Mixed mode RSA/ED25519 (SSH key) Slide 06	09	Disclaimer Slide 15
05	Apple Wallet support (components) Slide 07		

Application Overview – B-COMM 5.7.0

B-COMM – „Overview“

Basic software	TerminalStatus	CardLink	Whitelist	PEC
General	Configuration	Administration area	Administration area	AC
ENHANCED GUI	Event management	Components	Components	ENHANCED HR
ENHANCED IO	Debug issues	Testing tool	Testing tool	PDC
Client management	Several applications	Biometrics	AVISO	Email server
Licensing	System management	Template management	Commands	Send e-mail
ENHANCED Passwords	Interfaces	Enrollment	Interfaces	Debug issues
Communication	Mobile access			
http(s)	Configuration			

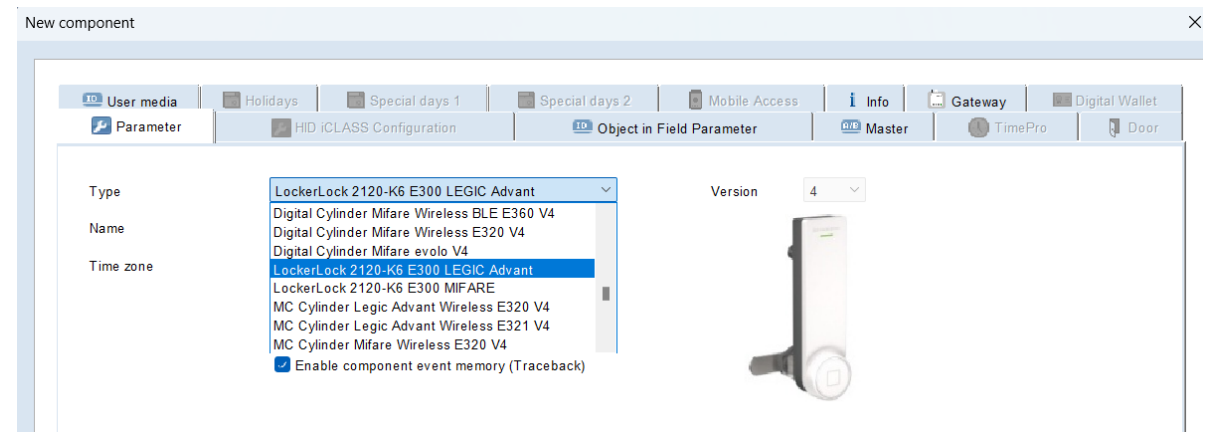
NEW

ENHANCED

LockerLock 2120-K6 support:



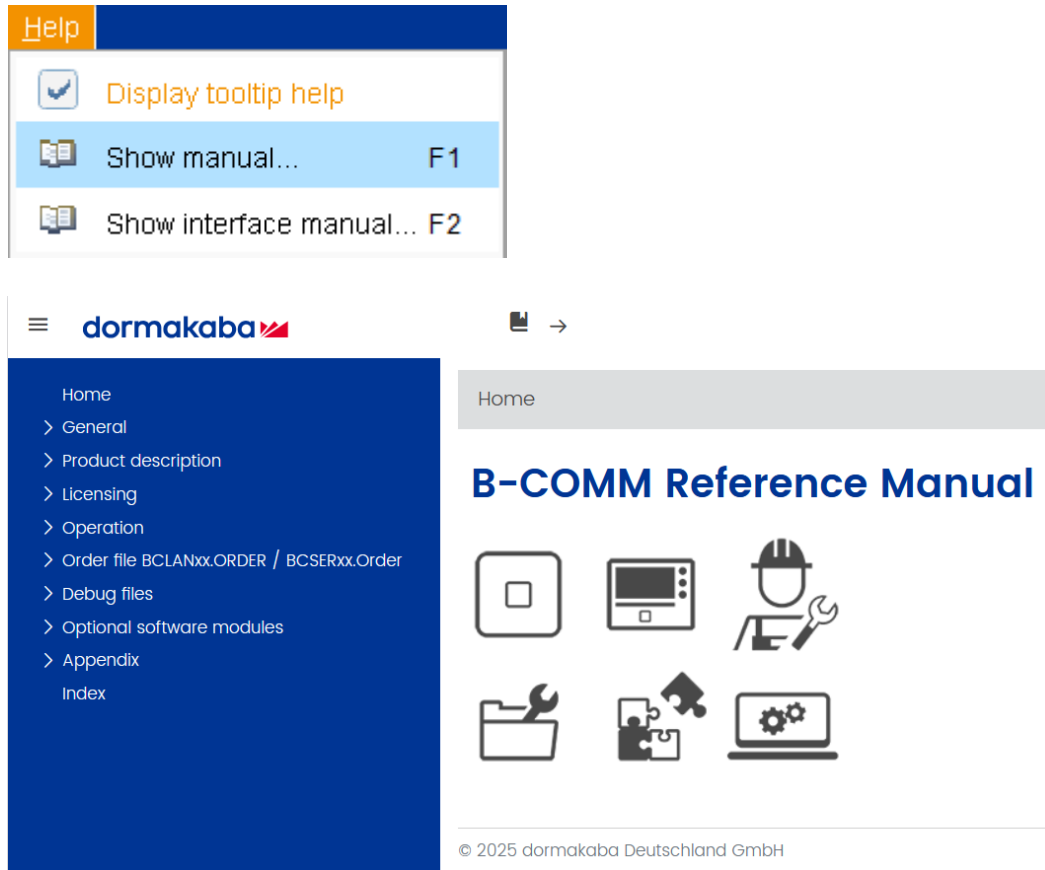
- LockerLock 2120-K6 – Integration
- The LockerLock 2120-K6 has been added as an additional component type in the actuators.ini file.
- When registering a new component, two LockerLock variants are offered in the type selection field



LockerLock 2120-K6 E300 for LEGIC Advant or for MIFARE

Graphically prepared example of a LockerLock 2120-K6

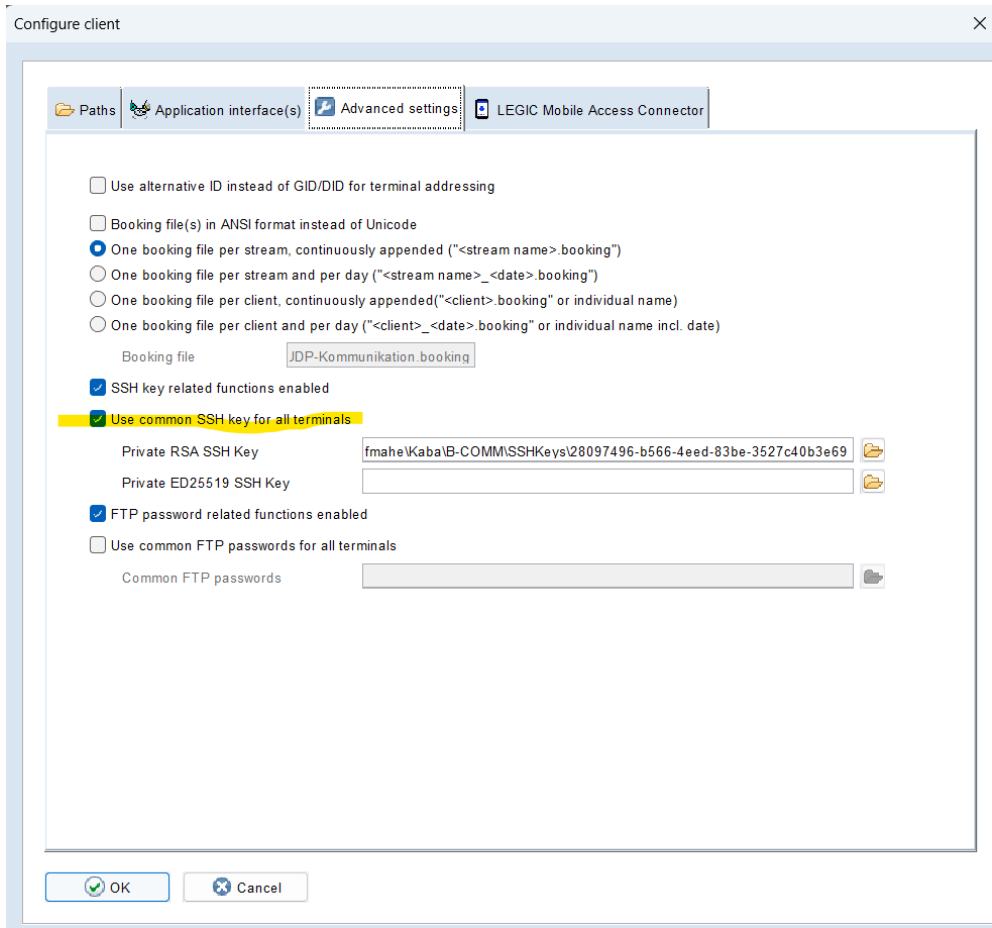
Documentation in HTML format:



To load it: Help

- Documentation:
- The previous documentation was provided in PDF format. This required a PDF editor and was not particularly convenient in many respects. For these reasons, the entire B-COMM documentation has been converted to HTML.
- The converted documentation includes:
 - 1) The Reference Manual
 - 2) The Interface Manual
 - 3) The Installation Manual
 - 4) The Biometrics Quick Guide
 - 5) The Bio Data Protection Descriptions (during enrollment)
 - 6) The 3-Party Licenses
- The manuals are still available for download in PDF format on the portal.

RSA and ED25519 in same client:



To load it: Right mouse click on client -> Configure... -> Advanced settings

- Order ‚SSH key exchange‘

Instead of an RSA key, an ED25519 key is generated if there is an openSSH server ≥ 7.5 on the device. This is the case by default on the following devices:

- 9[67]00-K6 from 73[5678]-09-X-K00
- 9200-K7 from 680-00-X-K00
- 9[678]00-K7 from 739-00-X-K00

	Geräte-Typ	Betriebssystem	Gerätesoftware	RSA	ED25519
Zutritts- manager	9200-K5	Linux 2.6	$\geq 669\text{-xx-X-Kxx}$	✓	✗
	9200-K7	Linux 4.14.184	$\leq 680\text{-03-X-Kxx}$	✓	✓
	9200-K7	Linux 5.10.76	$\geq 680\text{-04-X-Kxx}$	✓	✓
dormakaba Terminals	9600-K5	Android 2.2.1	$\leq 736\text{-04-X-K04}$ (737/738)	✓	✗
	9700-K5	Android 2.3.0	$\leq 735\text{-04-X-K04}$	✓	✗
	9600-K6 9700-K6	Android 5.0.2	$\leq 736\text{-07-X-K01}$ (737/738) $\leq 735\text{-07-X-K01}$	✓	✗
	9600-K6 9700-K6	Android 9	$\leq 736\text{-11-X-K01}$ (737/738) $\leq 735\text{-11-X-K01}$	✓	✓
	9600-K7 9800-K7	Android 12	$\geq 739\text{-00-X-K00}$	✗	✓

- Order 'Deployment of provisioned SSH keys'

- The order has been extended and now takes both key types into account
- Mixed operation of older and new dormakaba devices with the respective ED25519 and RSA SSH keys is possible under one client, whereby
 - ED25519 is only deployed to devices with openSSH server ≥ 7.5
 - RSA is not deployed to devices with openSSH server ≥ 9.5

Component – Apple Wallet support

Edit component

Parameter | Object in Field Parameter | Master | TimePro | Door | User media | **Digital Wallet**

Apple

Media Definition Number *i* 2

AID *i* 000003

File ID *i* 4

StartPos/Offset *i* 5

Length *i* 6

Terminal Type *i* 0007

TCI *i* 000008

Private key *i* 9

Authentication key *i* 10

User interaction *i* ☐

Active configuration *i* ☐

Edit Activate Clear Delete

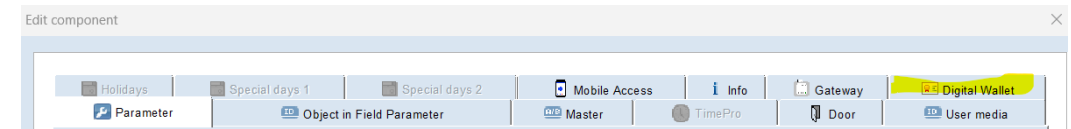
<< Page 1 of 1 >> Save

Load Default Save Default

OK Cancel

- Component Parameterization Apple Wallet

Apple Wallet is supported in the components. A new "Digital Wallet" tab has been implemented for this purpose.



Requirements:

- 1) The gateway is a 9040-K7
- 2) The gateway is equipped with firmware version 5.x
- 3) The component is Apple Wallet-enabled
- 4) The component has firmware version Bxx42_46RAT

If a component is not Apple Wallet-enabled, this tab is inactive and therefore cannot be selected.

The parameter settings are taken into account both during manual creation and during the installation wizard.

To load it: edit component -> Digital Wallet

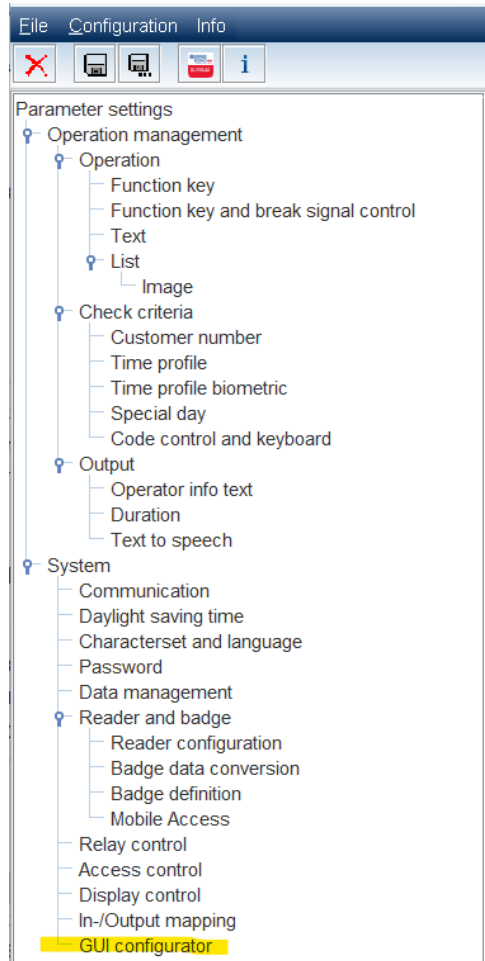
Gateway 9040-K7 – Apple Wallet support

The screenshot displays the web interface for the Gateway 9040-K7. On the left, a sidebar menu contains various settings, with 'Ethernet network' highlighted by a red rectangle. The main content area shows network configuration fields: MAC address (00:15:BC:2A:F4:68), DHCP (ON), IP address (192.168.1.107), Subnetmask (24 (255.255.255.0)), Default gateway (192.168.1.1), and DNS address 1 (192.168.1.1). Below these is the 'Network Authentication (IEEE 802.1X)' section with '802.1X Security' set to OFF. The 'Services' section includes toggles for UPnP, mDNS, and TLS 1.2 and later, all set to ON. At the bottom, the 'API 4.X compatibility mode' toggle is highlighted with a red rectangle and is currently ON. A 'Save changes' button is located at the bottom of the settings area.

- Integration of Gateway 9040-K7 Version 5
- API4.x Compatibility Mode
 - API 4.x compatibility mode must be disabled for the "Apple Wallet" function.
 - B-COMM 5.7.0 automatically disables compatibility mode when registering a dormakaba Wireless Gateway 9040-k7.
 - The necessary functions are only available after compatibility mode is disabled.

To load it: Right mouse click on a gateway -> Call Web UI...

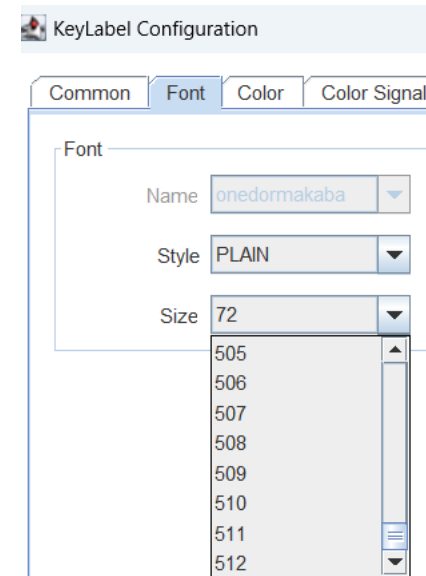
PEC/HR – GUI configurator



To load it: PEC -> Parameter settings -> System -> GUI configurator

- GUI configurator**

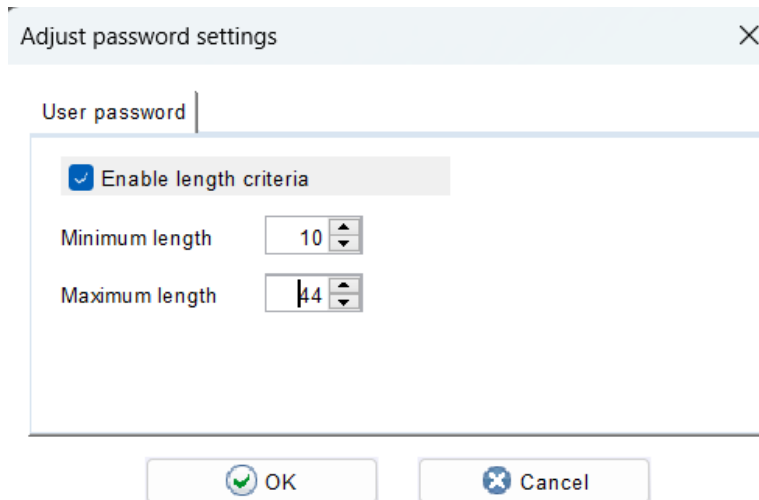
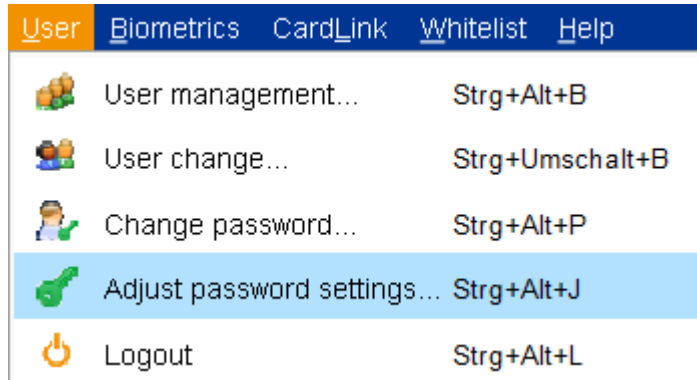
The maximum font size has been increased from 99 to 512



- Split screen improvements**

The parameter SplitAreaUsage is required to enable/disable the split screen on the terminal

User password

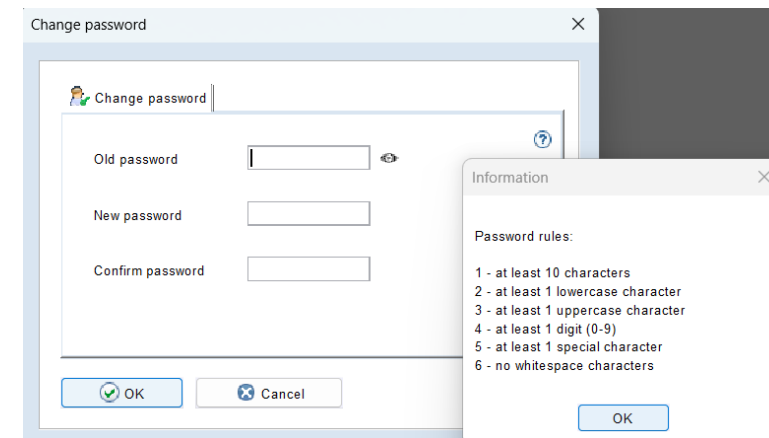


To load it: User -> Adjust password settings...

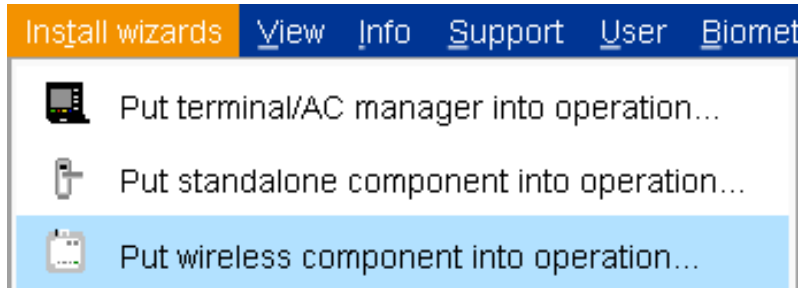
- Set password length
- The administrator can use Adjustable "Password Settings" Window for changing user password length
- The adjustable range is between a minimum of 10 and a maximum of 128 characters.

Note:

The password length can only be changed by the administrator or a user with administrator rights.



General



- **Install wizards**
 - In the B-COMM GUI, the menu item 'Installation Wizard / Commission Wireless Component' is reactivated.
- > The functionality of the installation wizard is not yet available in all versions, but the main areas of application work.
- > The wizard is **not available** for the combination of **CardLink components with MIFARE technology**.
- > The functionality for the manually commissioning wireless components is still guaranteed.

To load it: B-COMM GUI -> Install wizards

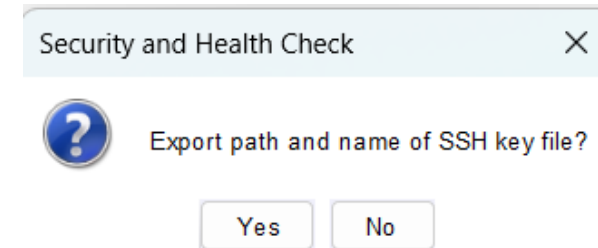
Further Features

Addition to ...

SHC (Security & Health Check) issues:

- The "Security and Health Check System Information" (SHC for short) has been expanded. To enable additional data transfer, a dialog with a single checkbox has been added.

The path and the file name of the SSH key (the so-called SSH key ID) can be transferred to the 'Security and Health Check' (SHC) data.

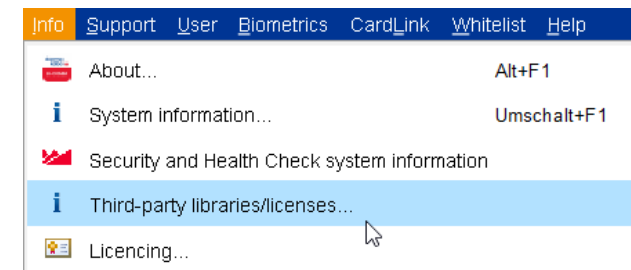


Biometric issues:

- The new version B-Device 2.2.12 has been integrated.

FOSS (Free & Open Source Software) issues:

- The external libraries used and integrated are subject to constant review. The list is constantly being revised and this list can be viewed for each version in the info tab.



Further Features

Addition to ...

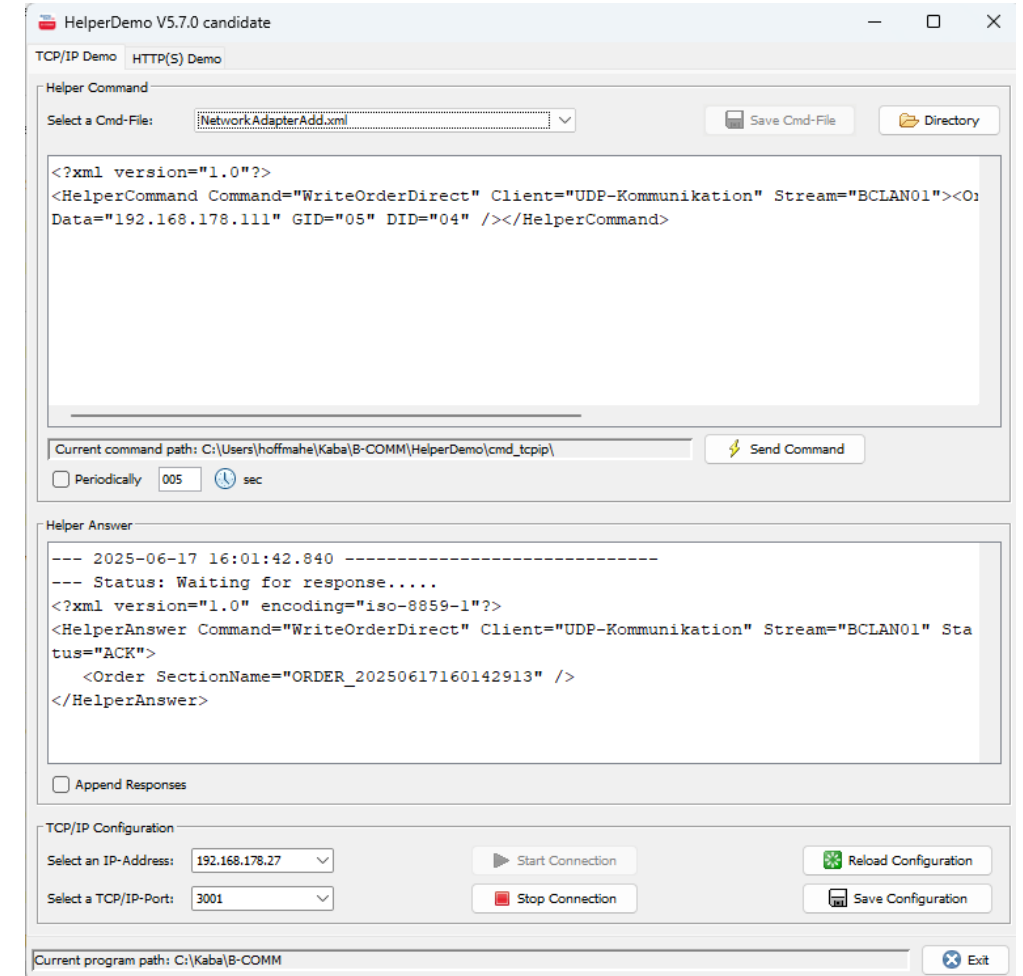
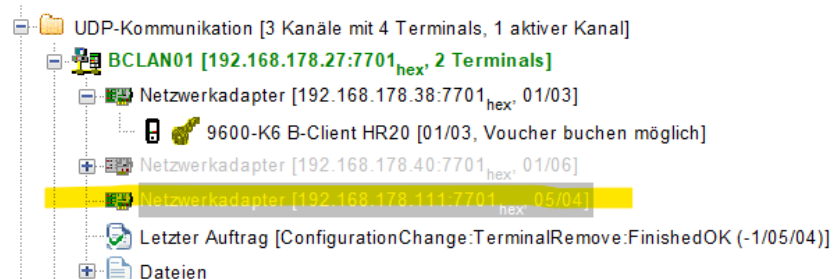
B-COMM Helper issues:

- Two new commands have been implemented:
- „Network adapter add“ (NetworkAdapterAdd)
 - „Terminal add“ (TerminalAdd)

Example of a command:

```
<?xml version="1.0"?>
<HelperCommand Command="WriteOrderDirect" Client="UDP-Kommunikation" Stream="BCLAN01"><O;
Data="192.168.178.111" GID="05" DID="04" /></HelperCommand>
```

Result:



To be continued..
with the next release

Thank you

dormakaba Deutschland GmbH

Albertstraße 3

78056 Villingen-Schwenningen

Germany

T: +49 7720 603-0

dormakaba.com

Disclaimer

This communication contains certain forward-looking statements including, but not limited to, those using the words "believes", "assumes", "expects" or formulations of a similar kind. Such forward-looking statements reflect the current judgement of the company, involve risks and uncertainties and are made on the basis of assumptions and expectations that the company believes to be reasonable at this time but may prove to be erroneous. Undue reliance should not be placed on such statements because, by their nature, they are subject to known and unknown risks, uncertainties and other factors outside of the company's and the Group's control which could lead to substantial differences between the actual future results, the financial situation, the development or performance of the company or the Group and those either expressed or implied by such statements. Except as required by applicable law or regulation, the company accepts no obligation to continue to report, update or otherwise review such forward-looking statements or adjust them to new information, or future events or developments.

This communication does not constitute an offer or an invitation for the sale or purchase of securities in any jurisdiction.

dormakaba®, dorma+kaba®, Kaba®, Dorma®, Ilco®, LEGIC®, Silca®, BEST® etc. are registered trademarks of the dormakaba Group. Due to country-specific constraints or marketing considerations, some of the dormakaba Group products and systems may not be available in every market.